

Bedford Business

One passionate team, working together to help you

www.investinbedford.com 01234 221889

November 2011

Features highlights from Bedford's business world, gives you a sneak preview of upcoming events and contains important snippets of information for local businesses.

Business News



New Investment

United Paper Products will shortly be moving from their Hitchin plant to Bedford after the purchase of a 70,000 sq ft office and manufacturing building at Arkwright Road, Bedford. The relocation to the town will help the company reach a wider base of clients and is great news for Bedford, as the company is one of the largest manufacturers of paper products in the UK and will create up to 85 new jobs in the area.

Blue Chip, the largest independent maintainer of IBM Mid-Range systems within the UK has continued to expand its Bedford presence with the acquisition of 13,000 sq ft premises on Caxton Road. This new property adds to their two existing premises in Bedford, including their UK Head Office. Richard Last from Brown & Lee Chartered Surveyors who worked on the deal commented "We are seeing good demand for industrial property in Bedford, particularly for freehold and detached units, which will hopefully lead to new development coming through in the area"



Clothing wholesaler Continental Clothing has recently relocated from London and opened a 40,000 sq ft site in the increasingly popular Cambridge Road Industrial Estate. When looking at new sites, it became apparent that Bedford would benefit them most due to its well connected location. The move to Bedford will create 10 new jobs initially.

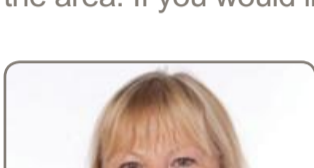
Paradigm Audio Visual Limited have recently located on St Martin Business Centre, into a 10,351 sq ft industrial unit. The letting follows the recent purchase of the estate by Centurion Industrial Asset Management (CIAM) in conjunction with Scottish Widows Investment Partnership.



Stimpsons Eves Chartered Surveyors have re-opened their doors for business in Bedford. Previously based in Harpur Street, Bedford in the mid-1970's, owner Giles Ferris explains "We have been able to considerably expand our market share within Bedford and feel this is now an opportune moment for us to return home to Bedford and start promoting the town".

Local Development Framework (LDF) Allocations Plan moves forward

Bedford's LDF Allocations Plan, which will allocate sites for specific land uses, such as housing or jobs has moved forward with the next stage approval at the Council's Executive. The plan includes a number of employment sites in Bedford for which there is already developer interest and will provide new job growth for the area. If you would like to look at the Plan and comment, please [click here](#).

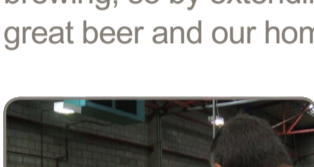


SEMLEP Chair and Private Sector Directors appointed

After an extensive and high profile recruitment process SEMLEP, South East Midlands Local Enterprise Partnership, is pleased to announce the appointment of six Private Sector Directors to serve on the SEMLEP Board under the chairmanship of Dr Ann Limb OBE DL. For more information on SEMLEP [click here](#).

Brewery tops Scottish ales with new sales

Bedford based brewery, Wells and Young's, has recently purchased two iconic Scottish beer brands from Heineken UK and propels the 135-year-old Bedford company into the top three premium ale breweries in the UK. Nigel McNally, MD of Wells and Young's, said "Bedford is already on the map as the home of great brewing, so by extending into Scotland, we are helping to raise the profile of our great beer and our hometown."



Mayor visits Fords

Dave Hodgson, Mayor of Bedford Borough and Philip Simkins, CEO of Bedford Borough Council recently visited Fords Packaging Systems in Bedford. The company have been based in Kempston for the last 50 years and hold a world class position of manufacturing aluminium capping presses and sealing systems and are one of the oldest manufacturing businesses in the Borough. MD John Wheelwright commented "The success of the company is based on the skill, knowledge and commitment of its Bedford workforce"

Maldives sign up to Olympic training base

Following on from Olympic and Paralympic Conferences in London, the Maldives Olympic team has signed up to train at the Bedford International Athletic Stadium and will stay at the University of Bedfordshire's Bedford accommodation. A number of Paralympic teams have also signed up to train in Bedfordshire including Tunisia and Ivory Coast.



Events & Info

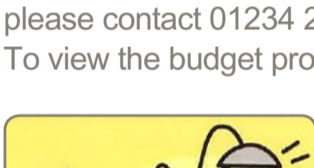
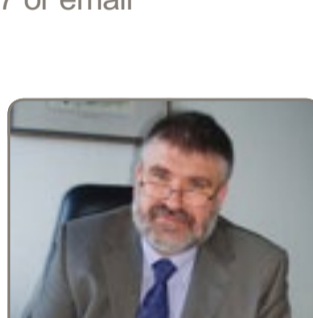


Bedford i-lab Open Day, November 9th, 10.30am - 4pm

Bedford i-lab offers flexible, high-quality office accommodation in a supportive business environment, fantastically located on the outskirts of Bedford, adjacent to the A421 Southern bypass. Come along and meet the team, talk to existing tenants, take a tour of the building. Contact 01234 834567 or email dan.hickman@bedfordi-lab.com.

Budget Briefing Session - Hosted by the Mayor of Bedford Borough, November 16th, 5.00pm - 7.00pm

Bedford Borough Council is facing an unprecedented challenge as it seeks to make the £36 million of savings required to deliver a balanced budget. This session is intended to provide information to the Council's plans for the budget and to give businesses the opportunity to talk directly to the Mayor about the plans and key issues for the business community. If you would like to attend, please contact 01234 276254 or email justine.ives@bedford.gov.uk. To view the budget proposals see [click here](#).

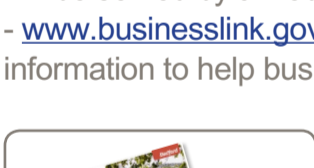
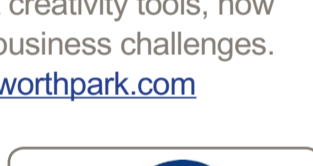


Creativity Tools Seminar & Practical Workshop, November 24th, 10.30am - 2pm

Free event based at Colworth Science Park. Learn about creativity tools, how to enhance problem solving and solve non - proprietary business challenges. Contact 01234 867000 or email charmayne.hussey@colworthpark.com

Business Link services for the future

The regional Business Link service will close on 25th November and customers will be served by a web-based national service. The Business Link website - www.businesslink.gov.uk - will be updated to provide easy-to-use, tailored information to help businesses start-up, improve and grow.

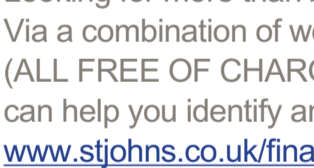
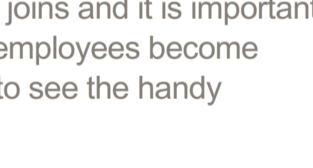


Welcome new employees to Bedford

Employee engagement can start before a new employee joins and it is important for businesses to connect quickly with them, the quicker employees become settled, the quicker they will start contributing. [Click here](#) to see the handy Bedford Employee 'Welcome Pack'.

Raising Finance for Business

Looking for more than £10,000? Not sure what options are open to you? Via a combination of workshops, one-to-one mentoring and practice pitches (ALL FREE OF CHARGE), the Understanding Finance for Business programme can help you identify and secure the right type of funding for your business. Visit www.stjohns.co.uk/finance for dates, details and online registration.

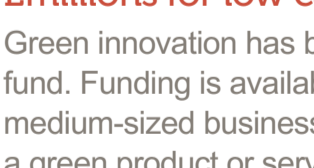


New funding for Leadership and Management development

Up to £1000 in funding is now available to help business leaders pay for training to grow their organisations. For more information, please call 0845 894 8969 or email LMAS@embtld.co.uk.

£millions for low carbon business support

Green innovation has been given a boost by a Dragon's Den-style regional fund. Funding is available via The Low Carbon Innovation Fund for small and medium-sized businesses to become more environmentally friendly or develop a green product or service. The fund is supported by the EEDA managed European Regional Development Fund, for more information [click here](#).



What could a Graduate do for your company?

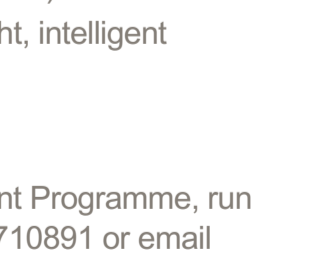
An affordable opportunity to get new blood into your organisation!

- Need help on a specific project? (8 - 24 week placements)
- Develop your business through the recruitment of bright, intelligent and talented individuals
- Cost effective

For more information on the New Step Graduate Placement Programme, run by business support organisation Wenta, contact 0845 3710891 or email hannahpichon@wenta.co.uk.

Bedford Property Search

Thinking about moving premises? To show you the range of sites and premises that are currently available in the Bedford area and help identify the right premises for you, we have developed a commercial property database including offices, business centres, industrial units, warehouses, commercial land and retail property. [Click here](#) to search for commercial property.



Help us to help you

Found it useful to have all this business information at your fingertips in an easy to read newsletter? Remember to keep checking our [website](#) for exciting news and events. Designed to bring the latest information to businesses, the website is a comprehensive guide for any business operating or considering locating in the Bedford area and to provide assistance to new businesses that are just starting their journey.

You can also follow us on twitter and facebook, which is updated regularly with all important, breaking news. Click on the links in the footer below.

We look forward to speaking to you soon!

Invest in Bedford Team

c/o Economic Development
Borough Hall, Cauldwell Street
Bedford MK42 9AP
Tel: +44 (0)1234 221889 Fax: +44 (0)1234 276265 Website: www.investinbedford.com

[twitter](#)

[facebook](#)